

# Go To LUNCH, LOSE INCHES

By: Siddhi Patel, PA-C, RN

HAVE YOU TRIED EVERY FAD DIET out there to lose those last few inches in your waist, thighs, arms, buttocks or back? Do you have stubborn small areas where the fat seems to linger even after diet and exercise? Have you tried liposuction but still have a few small areas where you cannot seem to get rid of the lingering fat? If you answered yes to any of these questions, then the popular new treatment, Elite-Lipo Dissolve, may be an effective measure that you can try to get the results you have been looking for in your body.


## TIPS FOR FINDING A PROFESSIONAL:

- ASK IF YOUR CLINICIAN IS ELITE-LIPO DISSOLVE CERTIFIED IN ADDITION TO HAVING MEDICAL LICENSURE
- DO NOT GET THE TREATMENT WHERE THERE IS HIGH PRESSURE SELLING OR PUSHING LARGE QUANTITIES OF THE TREATMENT
- GET CONSULTATION FROM THE CLINICIAN, NOT A SALESPERSON
- SPEAK TO YOUR FAMILY PHYSICIAN BEFORE DECIDING ON THE TREATMENT
- ASK FOR REFERENCES OR REFERRALS TO SOMEONE THAT HAS HAD SUCCESS WITH THE TREATMENT

Elite-Lipo Dissolve is a series of micro injections of Phosphatidylcholine Deoxycholate (PCDC) in localized areas of fat so you lose inches but not weight. The injection is a naturally occurring protein that helps you break down fat. The procedure has been in Europe for 10 to 15 years and in the states for 5 to 10 years with proven results. And most importantly, the medicine is FDA approved.

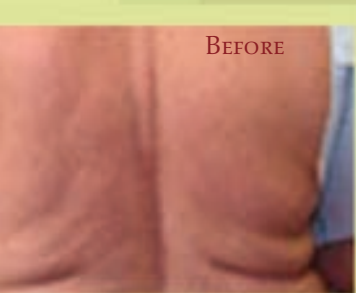
The treatment is great for your lunch break because it takes only around 30 minutes to complete and there is no downtime with the procedure. Most people go right back to work. Elite-Lipo Dissolve is not a replacement for liposuction or plastic surgery, but it is great for sculpting smaller areas or stubborn areas of fat. It can be very effective and can be used in conjunction with liposuction and plastic surgery.

The treatment typically shows the best results in three to four sessions and some patients see results in

a single treatment. Although results vary, a loss of 1 to 5 inches is not uncommon. However, it should be noted that there is a 4 percent chance that a patient will be resistant to the treatment. And while the treatment gets rid of those hard-to-maintain areas and is permanent based on existing fat cells, additional fat cells may grow in size without a healthy diet and exercise. So like many other procedures, Elite-Lipo Dissolve does require maintenance for long-term effectiveness! 



"AT FIRST I WAS SKEPTICAL, BUT I COULD FEEL THE DIFFERENCE WITHIN A MONTH. I AM VERY HAPPY WITH THE RESULTS"  
EMILY B.



Siddhi Patel is a physician's assistant, and registered nurse at Yuvan MedSpa in Cornelius. You can find more info on this procedure from their website: [http://www.yuvanmedspa.com/treat08\\_lipodissolve.html](http://www.yuvanmedspa.com/treat08_lipodissolve.html)